

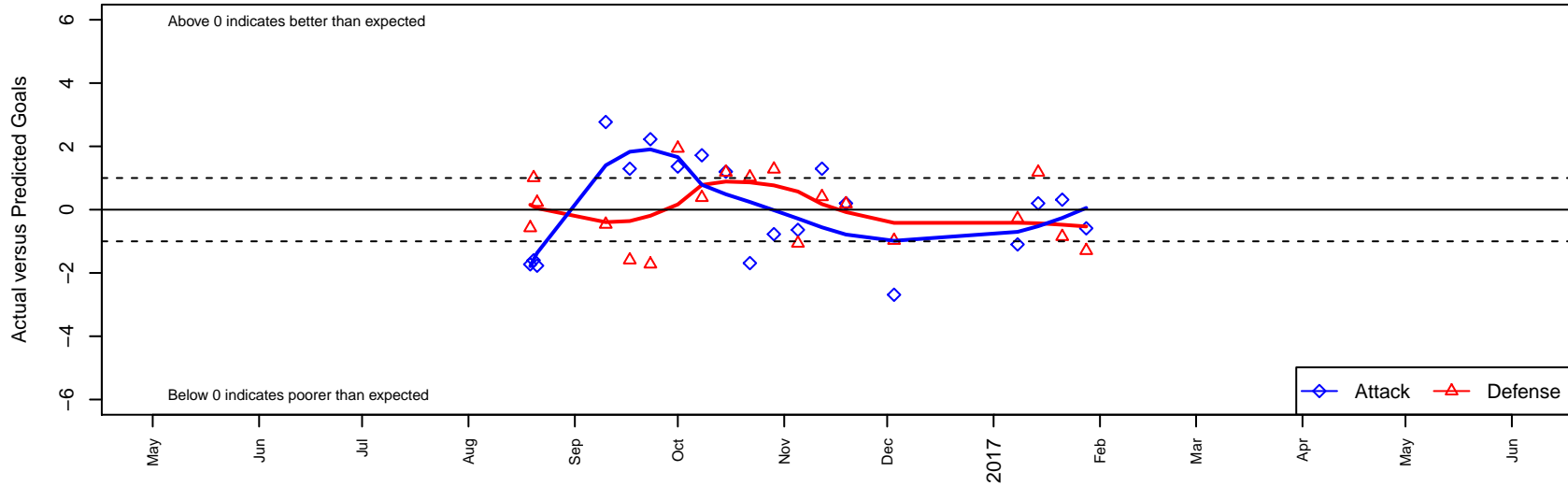
Lake Hills Lightning B03

Lake Hills SC
 Bellevue, WA
 B03 total strength=1064
 attack=4.25 defense=1.47
 fall league = NPSL Div 2 (03) U14

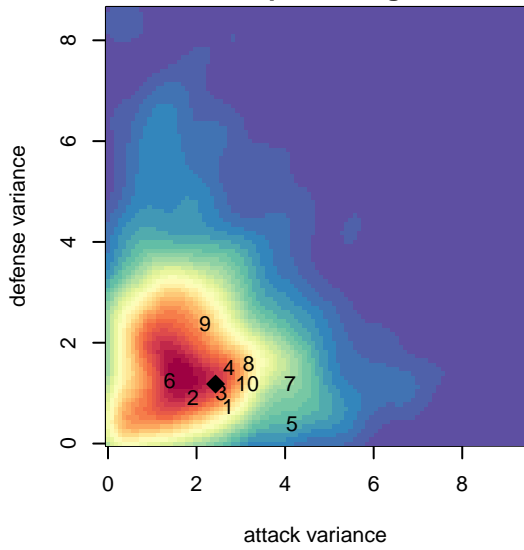
alt names used:
 LAKE HILLS SELECT LIGHTNING (WA)
 Lake Hills Lightning B03

Venues played:
 2016 Bigfoot Silver U14
 2016 NPSL Division 2 (03) U14
 2016 Founders Cup B03 Div A

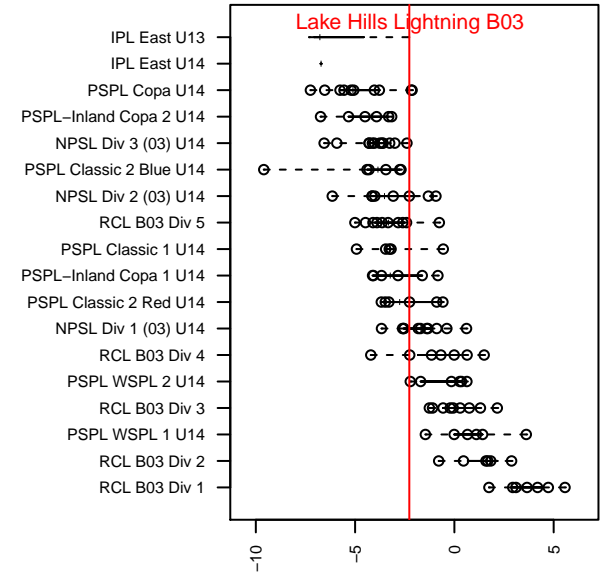
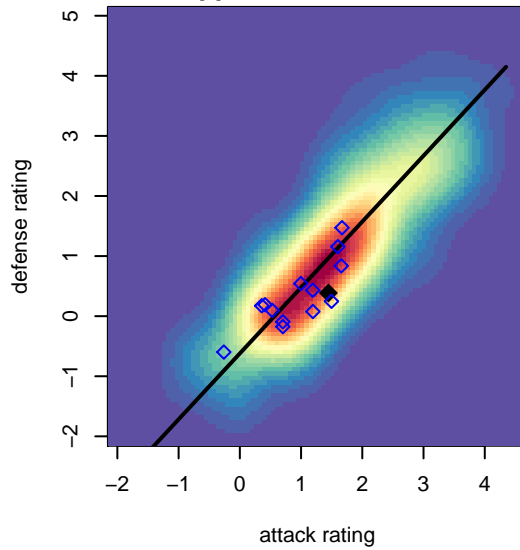
Lake Hills Lightning B03
 Dots are actual minus expected GF (blue circles) and GA (red triangles).
 Blue line is smoothed change in attack strength. Red is smoothed change in defense strength.



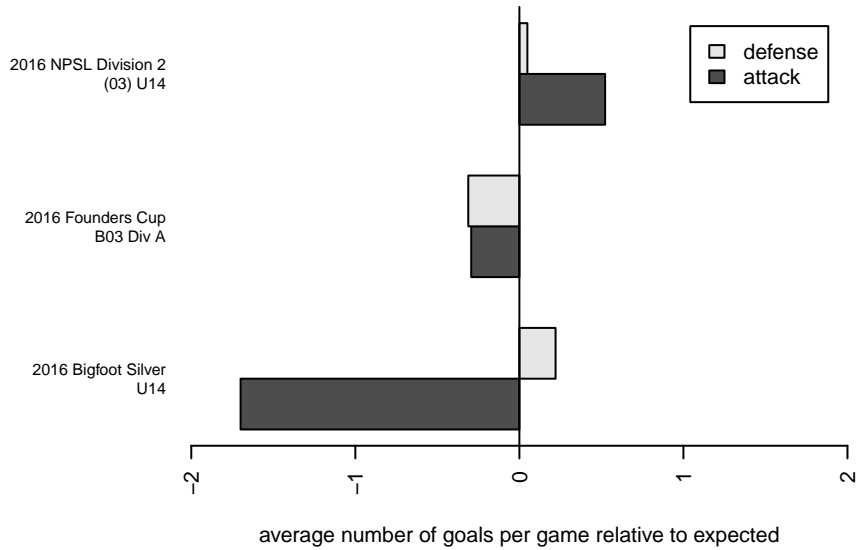
**attack and defense variance (black dot)
relative to other teams
and top 10 in region**



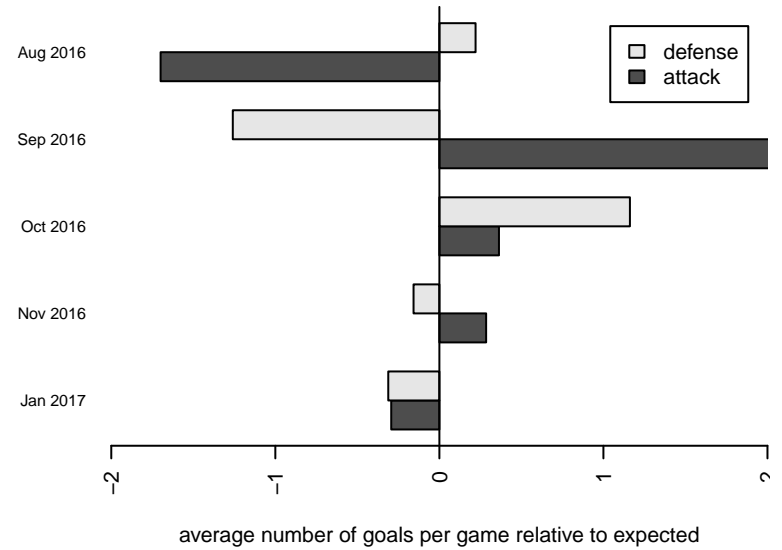
**attack and defense rating
relative to others at age
and all opponents in last 13 months**



Performance relative to 13 month average



Performance relative to 13 month average



date	home		away		venue	pred.home	pred.away
2017-01-28	Lake Hills Lightning B03	3	Seattle United NE Blue B03	4	2016 Founders Cup B03 Div A	3.59	2.71
2017-01-21	Lake Hills Lightning B03	4	Seattle United W White B03	2	2016 Founders Cup B03 Div A	3.68	1.15
2017-01-14	Lake Hills Lightning B03	4	Highline SA B03	1	2016 Founders Cup B03 Div A	3.80	2.18
2017-01-08	STU Evolution Black B03	4	Lake Hills Lightning B03	0	2016 Founders Cup B03 Div A	3.72	1.10
2016-12-03	Mukilteo Rush B03	2	Lake Hills Lightning B03	1	2016 NPSL Division 2 (03) U14	1.03	3.69
2016-11-19	Lake Hills Lightning B03	4	Highline SA B03	2	2016 NPSL Division 2 (03) U14	3.80	2.18
2016-11-12	Lake Hills Lightning B03	3	BIFC Blue B03	3	2016 NPSL Division 2 (03) U14	1.71	3.41
2016-11-05	Kent United White B03	4	Lake Hills Lightning B03	1	2016 NPSL Division 2 (03) U14	2.94	1.64
2016-10-29	Lake Hills Lightning B03	3	Mercer Island FC Arsenal B03	0	2016 NPSL Division 2 (03) U14	3.77	1.28
2016-10-22	Lake Hills Lightning B03	2	Mukilteo Rush B03	0	2016 NPSL Division 2 (03) U14	3.69	1.03
2016-10-15	Highline SA B03	1	Lake Hills Lightning B03	5	2016 NPSL Division 2 (03) U14	2.18	3.80
2016-10-08	Bellevue United Select B03	1	Lake Hills Lightning B03	7	2016 NPSL Division 2 (03) U14	1.38	5.28
2016-10-01	Lake Hills Lightning B03	3	Kent United White B03	1	2016 NPSL Division 2 (03) U14	1.64	2.94
2016-09-23	Mercer Island FC Arsenal B03	3	Lake Hills Lightning B03	6	2016 NPSL Division 2 (03) U14	1.28	3.77
2016-09-17	BIFC Blue B03	5	Lake Hills Lightning B03	3	2016 NPSL Division 2 (03) U14	3.41	1.71
2016-09-10	Lake Hills Lightning B03	11	Crossfire Select Brown B03	1	2016 NPSL Division 2 (03) U14	8.23	0.54
2016-08-21	Seattle United W Blue B03	2	Lake Hills Lightning B03	1	2016 Bigfoot Silver U14	2.23	2.77
2016-08-20	Cascade FC Green B03	1	Lake Hills Lightning B03	1	2016 Bigfoot Silver U14	2.01	2.60
2016-08-19	LWPFC White Barracudas B03	2	Lake Hills Lightning B03	3	2016 Bigfoot Silver U14	1.43	4.73